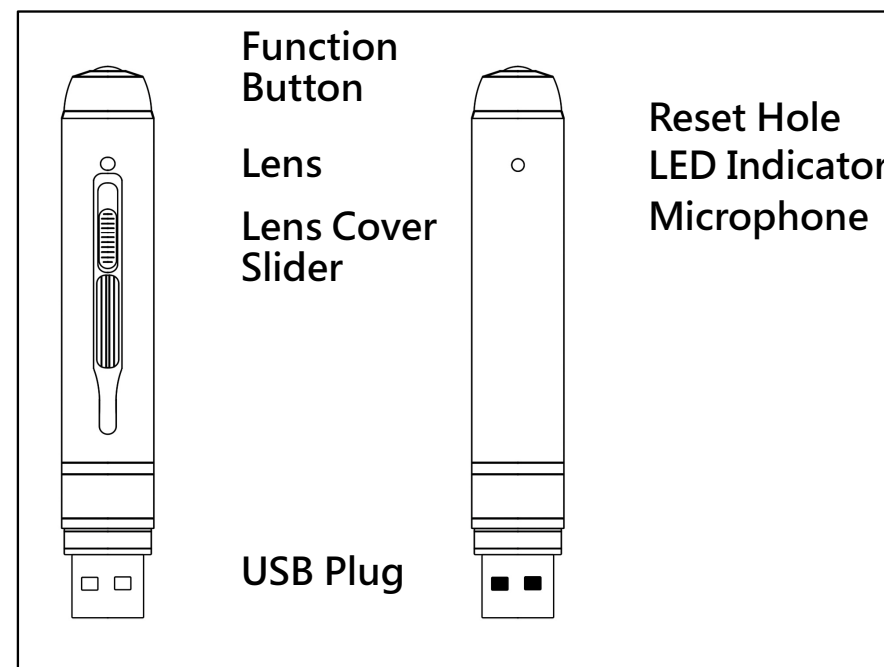


User Manual

Product Features

- Super image sensor for low illumination video recording. Auto focus, quick light response
- Full HD 1080P up to 30fps, 720P up to 60fps
- H.264 compression
- Built-in micro SD card, support up to 32GB
- Only one button, easy operation
- ultra-integrated pen type design, suitable for meeting recording, evidence recording, and outdoor sports scenes, etc.
- Easy download to PC/MAC with USB plug

Product Overview



Before operating the unit, please read this manual carefully and understand thoroughly. Retain it for future use

Basic Operations

1. Turning The Unit On/ Video Recording

Press and hold the Function button till the blue indicator turns on, release the button, the green indicator will blink and then turn off, the unit starts video recording.

Click the Function button again, will stop recording, the blue indicator turns on and the unit is on standby mode.

When the video clip length is over 10 minutes, the unit will save the current clip file, and then restart video recording automatically.

Note: Be sure to open the lens cover before recording.

2. Photo Shooting

Enter Photo Mode: When the unit is on standby mode(the blue indicator keeps on), double click the Function button, the blue and green indicators will blink alternately, the unit entered Photo Mode .

Click the Function button once to take a photo, the blue indicator blinks rapidly.

Quit the Photo mode: Double click the Function button, the unit will back to Standby Mode, the blue indicator keeps on.

3. Turning The Unit Off

When the unit is on, press and hold the Function button for about 3 seconds, the unit will shut down.

Auto power off function:

The unit will shut down automatically in following conditions:

- (1). The battery power is low. The blue indicator will blink for seconds, and then the unit will shut down.
- (2). The memory is full. The blue and green indicators will blink for seconds, and then the unit will shut down.
- (3). If no operation for one minute in Standby Mode, the unit will shut down to save power.

4. Charging The Battery

The unit has an internal, rechargeable battery. The battery can be charged by following ways:

1). Plug the unit into your computer USB port.

2). Plug the unit to DC5V battery charger.

During charging, the blue indicator will blink, when the battery power is full, the blue indicator keeps on.

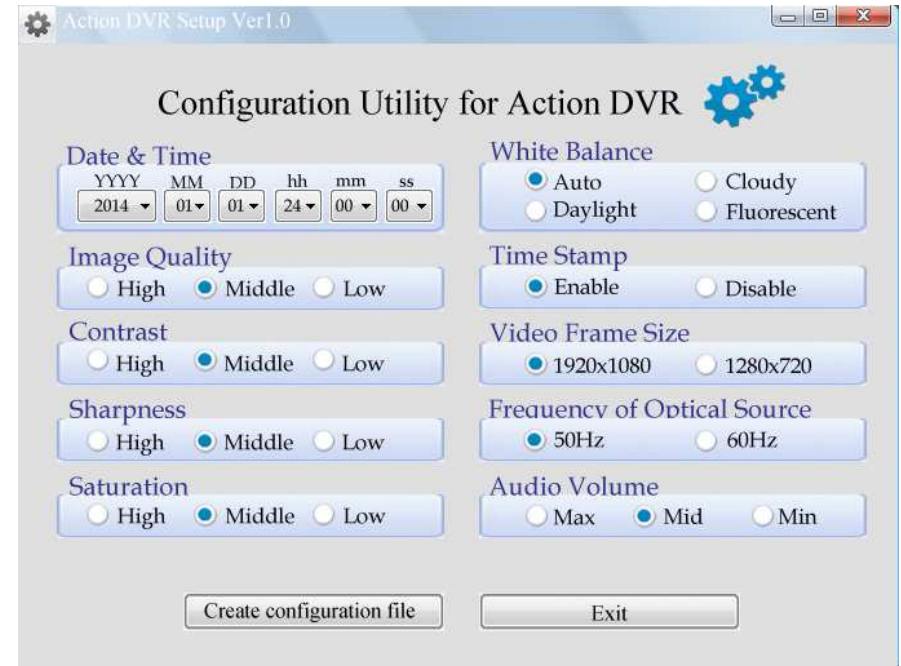
5.Reset Function

When the unit works abnormal for illegal operation or other unknown reasons, it needs to be reset.

Use a thin stick (e.g. toothpick) to press the Reset button inside the Reset hole. Restart the unit, it will work normally again.

6.Setting The Unit

Plug the unit into the computer USB port, a new removable disk will appear on the computer screen. Open the removable disk, you will find the file **setup.exe** under the root directory, double-click the file to run it, following window will appear:



You can set date/time, frame size, image quality, audio volume, etc. When the setting is completed, click the button **Create configuration file** on the lower left to save the settings.

To make the settings take effect, disconnect the unit with computer, and turn the unit on.

Specifications

View Angle :	65°
Min. Illumination :	1 Lux
Video Format :	MOV
Compressed Format:	H.264 advanced version
Vedio Resolution :	1920x1080 · 1280x720
Frame Rate :	1080P max.30fps, 720P max.60fps
Photo Format :	JPG 2048x1536
Storage:	Micro SD
USB Interface :	USB 2.0
Battery Charge :	DC 5V/500mA
Battery Capacity:	380mAH
Dimension :	155×14.5×14.5mm

(Specifications are subject to minor change with upgrade and update. Please base on real object.)

Caution:

Your device is a product of superior design and craftsmanship and should be treated with care. The following suggestions will help you protect your warranty coverage.

- Keep the device dry. Precipitation, humidity, and all types of liquids or moisture can contain minerals that will corrode electronic circuits. If your device does get wet, allow it to dry completely.
- The unit may become fairly hot during recording – this is normal. To ensure proper cooling do not block the flow of air to the cover of the unit.
- Do not drop, knock, or shake the device. Rough handling can break internal circuit boards and fine mechanics.
- Do not use harsh chemicals, cleaning solvents, or strong detergents to clean the device.

*Please follow State's law. Do not use the unit illegally.